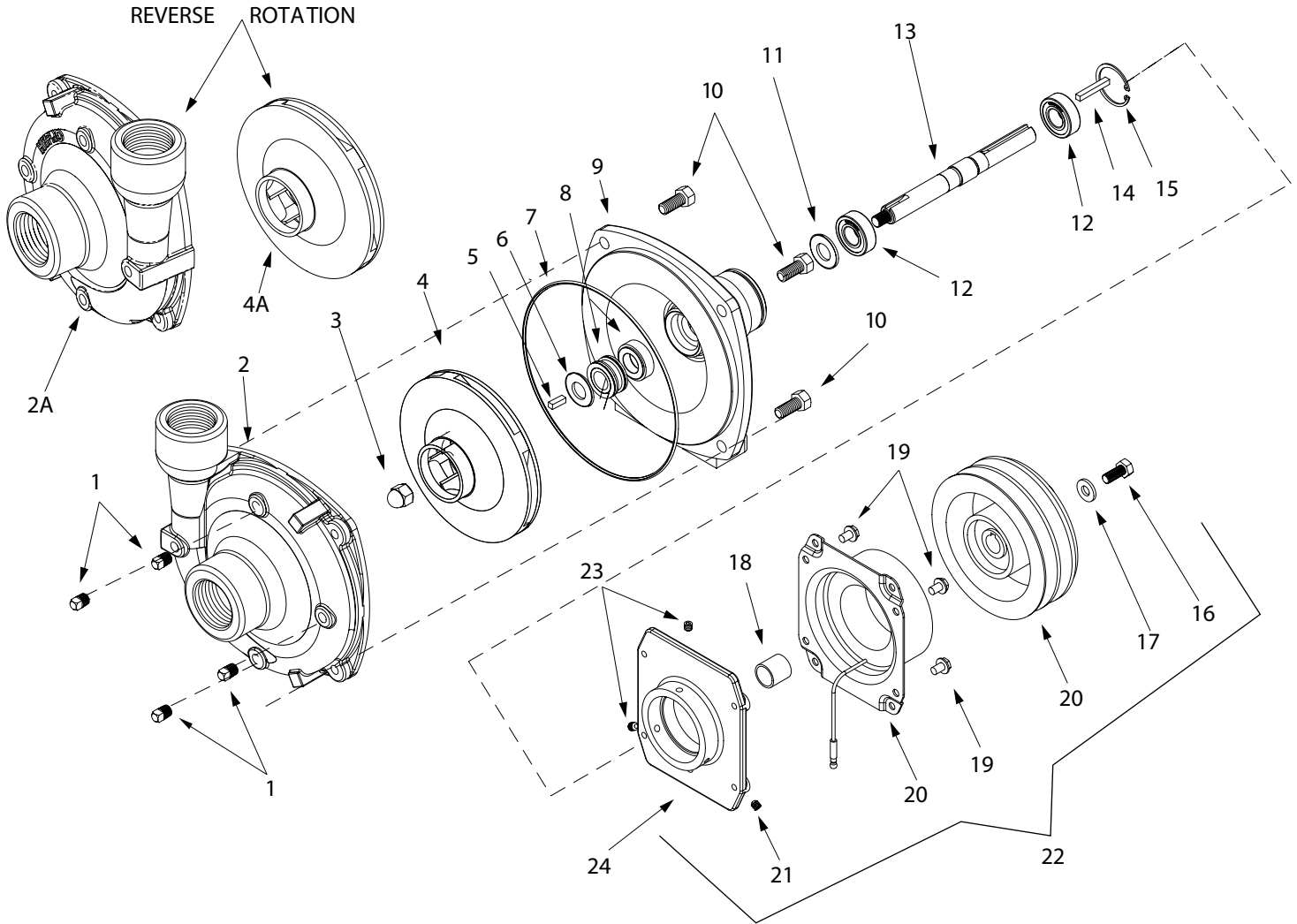


9203 Cast Iron and Stainless Steel Series



Seal Kit for Stainless Series:
No. 3430-0589 consists of:
(1) Ref. 7 O-Ring
(1) Ref. 8 Mechanical seal

Seal Kit for Cast Iron Series
No. 3430-0332 consists of:
(1) Ref. 7 O-Ring
(1) Ref. 8 Mech. seal
(1) Ref. 6 Gasket

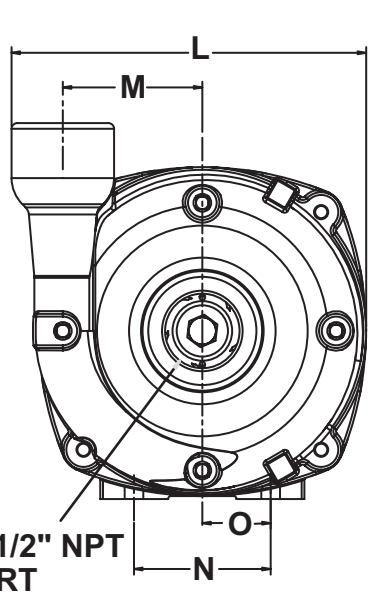
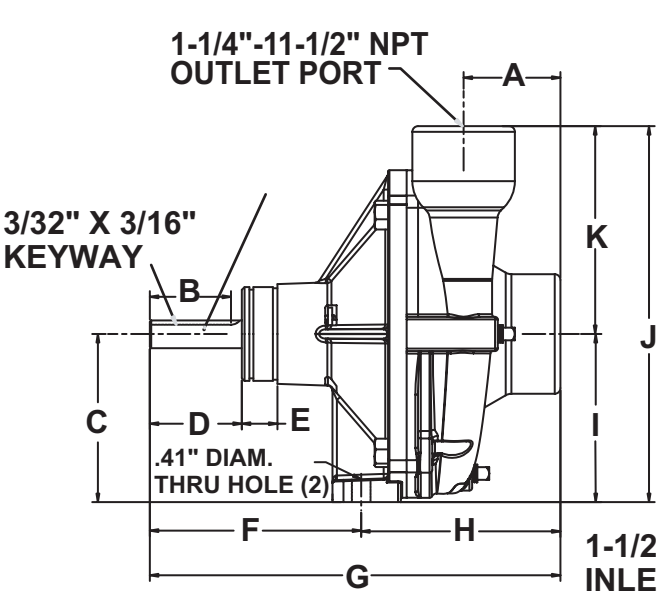
Note: When ordering parts, give quantity, part number, description and complete model number. Reference numbers are used ONLY to identify parts in the drawing and NOT to be used as order numbers.

| No. | Qty. Req'd. | Part No. | Description |
|-----|-------------|------------|--------------------------------------|
| 1 | 4 | 2406-0007 | Drain Plug (Cast series) |
| 1 | 4 | 2406-0016 | Drain Plug (316 Stainless series) |
| 2 | 1 | 0150-9000C | Pump Casing (Cast series) |
| 2 | 1 | 0150-9000S | Pump Casing (Stainless series) |
| 2A | 1 | 0152-9000C | Pump Casing (Reverse)(Cast series) |
| 2A | 1 | 0152-9000S | Pump Casing (Reverse)(Stainless) |
| 3 | 1 | 2253-0002 | Impeller Nut (Cast series) |
| 3 | 1 | 2253-0006 | Impeller Nut (Stainless series) |
| 4 | 1 | 0401-9100P | Impeller (Model 9203C) (Nylon) |
| 4 | 1 | 0402-9100P | Impeller (Model 9203S) (Poly) |
| 4A | 1 | 0404-9100P | Impeller (Reverse)(Cast series) |
| 4A | 1 | 0403-9100P | Impeller (Reverse)(Stainless series) |
| 5 | 1 | 1610-0015 | Key (Cast series) |
| 5 | 1 | 1610-0057 | Key (Stainless series) |
| 6 | 1 | 1700-0100 | Gasket (Cast series) |
| 7 | 1 | 1720-0083 | O-Ring |
| 8 | 1 | 2120-0008 | Mechanical Seal (Optional Buna-N) |
| 8 | 1 | 2120-0009 | Mechanical Seal (Cast series) |

| Ref. No. | Qty. Req'd. | Part No. | Description |
|----------|-------------|-------------|---|
| 8 | 1 | 3430-0589 | Mech. Seal (Silicon Carbide) (Stainless) Includes ref #5 O-Ring |
| 9 | 1 | 0750-9200C3 | Mounting Flange (Cast series) |
| 9 | 1 | 0756-9200S | Mounting Flange (Stainless series) |
| 10 | 4 | 2210-0020 | Bolt (Cast series) |
| 10 | 4 | 2210-0125 | Bolt(Stainless series) |
| 11 | 1 | 1410-0056 | Slinger Ring |
| 12 | 2 | 2000-0010 | Ball Bearing |
| 13 | 1 | 0505-9200 | Pump Shaft |
| 14 | 1 | 1610-0014 | Key |
| 15 | 1 | 1820-0013 | Bearing Retainer |
| 16 | 1 | 2210-0003 | Bolt |
| 17 | 1 | 2270-0092 | Retaining Washer |
| 18 | 1 | 1410-0107 | Spacer |
| 19 | 4 | N/A | Bolt (part of clutch assy) |
| 20 | 1 | 2526-0012 | Clutch |
| 21 | 3 | 2230-0001 | Setscrew |
| 22 | 1 | 3430-0592 | Clutch Kit |

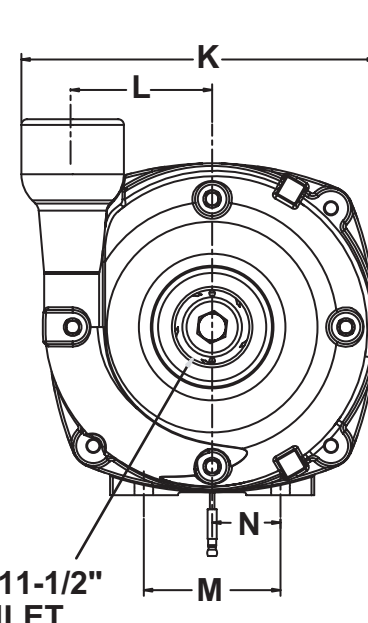
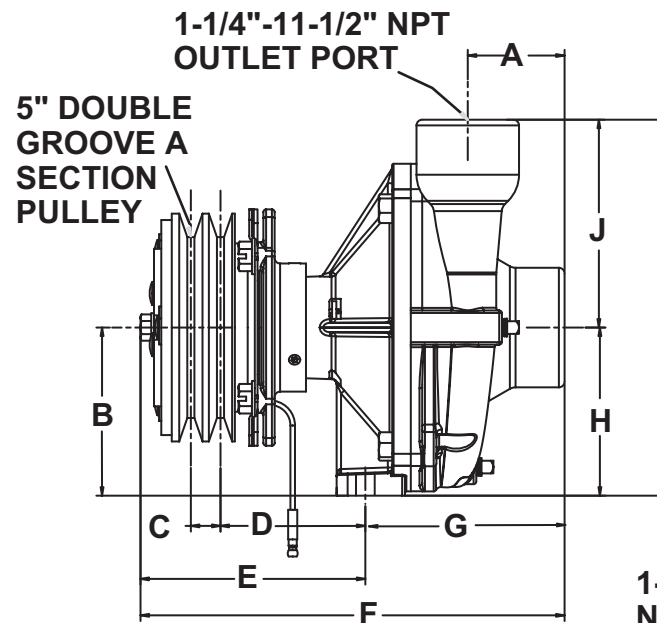
| | | | | | | | | | | | | | | | | | |
|------------------------|------|--------|------|--------|------|--------|------|--------|------|--------|------|---------|------|---------|------|---------|------|
| ALL 9203 SERIES | | GPM at | HP | GPM at | HP | GPM at | HP | GPM at | HP | GPM at | HP | GPM at | HP | GPM at | HP | GPM at | HP |
| | RPM | 10 PSI | | 20 PSI | | 40 PSI | | 60 PSI | | 80 PSI | | 100 PSI | | 120 PSI | | 140 PSI | |
| | 2400 | 80 | 1.9 | 65 | 1.8 | 26 | 1.3 | | | | | | | | | | |
| | 3600 | 105 | 5.3 | 105 | 5.3 | 92 | 5.0 | 50 | 3.7 | | | | | | | | |
| | 4200 | 122 | 8.2 | 120 | 7.9 | 115 | 7.7 | 98 | 7.1 | 56 | 5.3 | | | | | | |
| | 5000 | 140 | 12.6 | 140 | 12.6 | 138 | 12.6 | 130 | 12.2 | 118 | 11.6 | 88 | 9.9 | 45 | 7.2 | | |
| | 5500 | 140 | 14.9 | 140 | 14.9 | 138 | 14.9 | 135 | 15.2 | 130 | 15.2 | 118 | 14.4 | 90 | 12.5 | 60 | 9.8 |
| | 6000 | 140 | 17.1 | 140 | 17.1 | 140 | 17.5 | 140 | 18.0 | 135 | 18.2 | 130 | 18 | 125 | 18.2 | 100 | 16.3 |

| | | | | | | | | | | | | | | | | | |
|------------------------|------|---------|------|---------|------|---------|------|---------|------|---------|------|---------|------|---------|------|---------|------|
| ALL 9203 SERIES | | LPM at | HP | LPM at | HP | LPM at | HP | LPM at | HP | LPM at | HP | LPM at | HP | LPM at | HP | LPM at | HP |
| | RPM | 0.7 BAR | | 1.4 BAR | | 2.8 BAR | | 4.1 BAR | | 5.5 BAR | | 6.9 BAR | | 8.3 BAR | | 9.7 BAR | |
| | 2400 | 303 | 1.9 | 246 | 1.8 | 98 | 1.3 | | | | | | | | | | |
| | 3600 | 397 | 5.3 | 397 | 5.3 | 348 | 5.0 | 189 | 3.7 | | | | | | | | |
| | 4200 | 462 | 8.2 | 454 | 7.9 | 435 | 7.7 | 371 | 7.1 | 212 | 5.3 | | | | | | |
| | 5000 | 530 | 12.6 | 530 | 12.6 | 522 | 12.6 | 492 | 12.2 | 447 | 11.6 | 333 | 9.9 | 170 | 7.2 | | |
| | 5500 | 530 | 14.9 | 530 | 14.9 | 522 | 14.9 | 511 | 15.2 | 492 | 15.2 | 447 | 14.4 | 341 | 12.5 | 227 | 9.8 |
| | 6000 | 530 | 17.1 | 530 | 17.1 | 530 | 17.5 | 530 | 18.0 | 511 | 18.2 | 492 | 18 | 473 | 18.2 | 379 | 16.3 |



9203C

| Dimensions | | |
|------------|--------|-------|
| | Inches | mm |
| A | 2.13 | 54 |
| B | 1.78 | 45.2 |
| C | 3.69 | 93.7 |
| D | 2.02 | 51.3 |
| E | 0.78 | 19.9 |
| F | 4.64 | 117.8 |
| G | 9.01 | 228.9 |
| H | 4.37 | 111.1 |
| I | 3.69 | 93.7 |
| J | 8.25 | 209.6 |
| K | 4.56 | 115.9 |
| L | 7.78 | 197.7 |
| M | 3.06 | 77.8 |
| N | 3 | 76.2 |
| O | 1.5 | 38.1 |



9263

| Dimensions | | |
|------------|--------|-------|
| | Inches | mm |
| A | 2.12 | 53.8 |
| B | 3.69 | 93.7 |
| C | 0.65 | 16.5 |
| D | 3.18 | 80.7 |
| E | 4.93 | 125.3 |
| F | 9.31 | 236.4 |
| G | 4.32 | 109.7 |
| H | 3.69 | 93.7 |
| I | 8.25 | 209.6 |
| J | 4.56 | 115.9 |
| K | 7.78 | 197.7 |
| L | 3.11 | 78.9 |
| M | 3 | 76.2 |
| N | 1.5 | 38.1 |