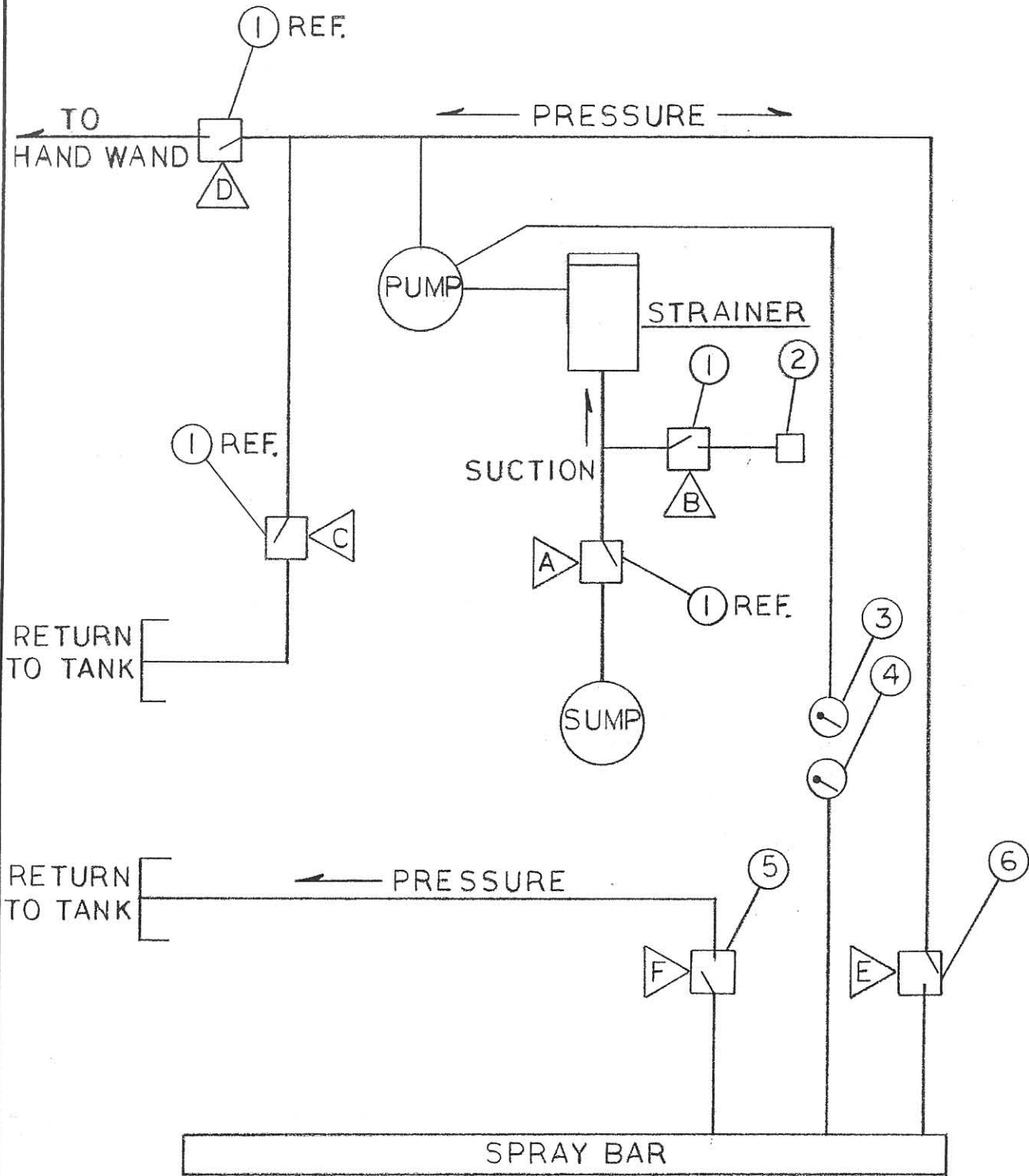


SPRAY SYSTEM SCHEMATIC








SPRAY SYSTEM





<u>ITEM</u>	<u>QTY.</u>	<u>DESCRIPTION</u>	<u>PART NO.</u>
1	4	BALL VALVE	RP03493
2	1	QUICK DISCONNECT	RP03544
3	1	PRESSURE GUAGE	RP03102
4	1	PRESSURE GUAGE	RP03102
5	1	VALVE	RP03553
6	1	VALVE	RP03554

OPERATING INSTRUCTIONS:

TO FILL TANK:

1. CLOSE VALVE 
2. OPEN VALVES  & 
3. START PUMP
4. CLOSE VALVES  & 

TO SPRAY:

1. OPEN VALVES  &  PRIOR TO SPRAYING
2. DEPRESS PUMP FOOT PEDAL TO PRESSURIZE SPRAY BAR. (OPENS VALVES  & CLOSES VALVE )